

Standard Width & Height Options
Container Configurations
Mounting Rail Options
Mounting Options
End Wall Options
Door Options
Securing (Hold Down) Options
Footing Options
Truss Profile Examples

 **DOMESHELTER**
AUSTRALIA



100%
GENUINE
DOMESHELTER™

SPECIFICATIONS GUIDE

ISO 9001
AS/NZS 4801
OHSAS 18001

BUREAU VERITAS
Certification





STANDARD WIDTH AND HEIGHT OPTIONS

Engineered custom sizes available on request

Dimensions shown are Arch Height / Total Height.
Total height based on standard 2.6m high container.
Add 0.3m for High Cube Container

STANDARD VS CUSTOMISED

DomeShelter™ Fabric Structures come in both standard and customised sizes and configurations.

Standard sizes with or without minor variations are readily available. We also specialise in customising structures with specialist design and engineering input to create shelter solutions that reflect the specific needs of our client.

STANDARD SIZED SHELTERS

This Specification Guide sets out the common Standard sizes for both width and height, based on using ISO Containers as the Mounting option. These widths generally apply also to Post Mounting and Concrete Mounting.

CUSTOM SIZED SHELTERS

If you require a shelter that does not match these standard configurations, get in touch with a DomeShelter™ Consultant to discuss your needs.



STANDARD WIDTH AND HEIGHT OPTIONS

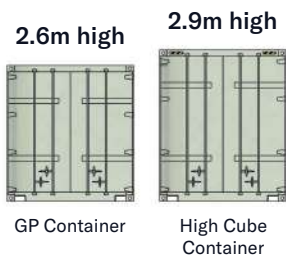
Engineered custom sizes available on request

17 METRE			
			
17m Standard Arch 4.5m / Total 7.1m	17m Hi-Rise Arch 6.0m / Total 8.6m	17m Super-Rise Arch 7.1m / Total 9.7m	
20 METRE		21 METRE	
			
20m Super High-Rise Arch 12.0m / Total 14.6m	21m Standard Arch 5.1m / Total 7.7m	21m Hi-Rise Arch 6.0m / Total 8.6m	21m Super-Rise Arch 9.0m / Total 11.6m
23 METRE	25 METRE		30 METRE
			
23m Standard Arch 5.0m / Total 7.6m	25m Standard Arch 6.8m / Total 9.4m	25m Hi-Rise Arch 6.9m / Total 9.5m	30m Standard Arch 6.8m / Total 9.4m

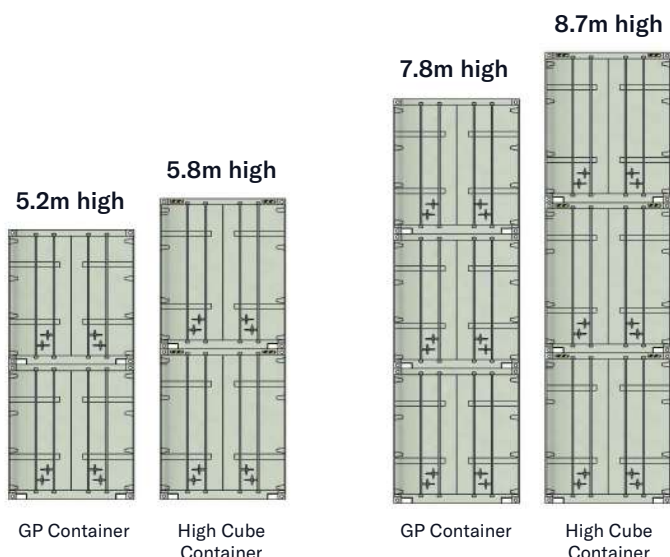
HEIGHT OPTIONS

ISO Container Dimensions

	Length	Height		Width
		Std GP	Hi-Cube	
20 Foot Container	6.05m 20ft	2.6m 8ft 6in	2.9m 9ft 6in	2.44m 8ft
40 Foot Container	12.2m 40ft	2.6m 8ft 6in	2.9m 9ft 6in	2.44m 8ft



Single Stack



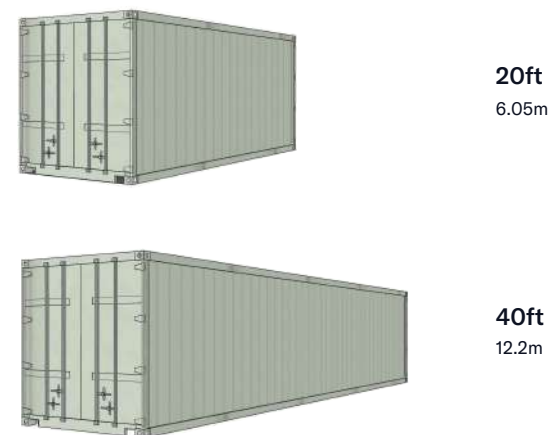
Double Stack

Triple Stack

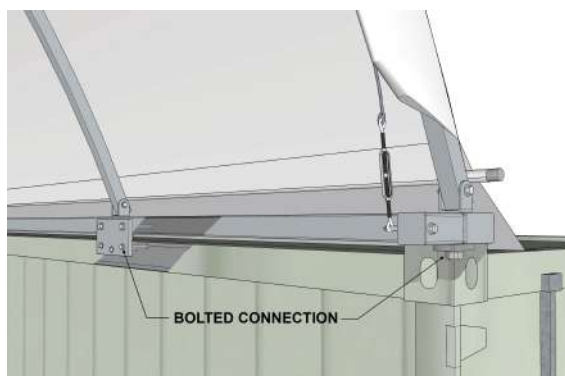
LENGTH OPTIONS

End to End in 20ft or 40ft Increments

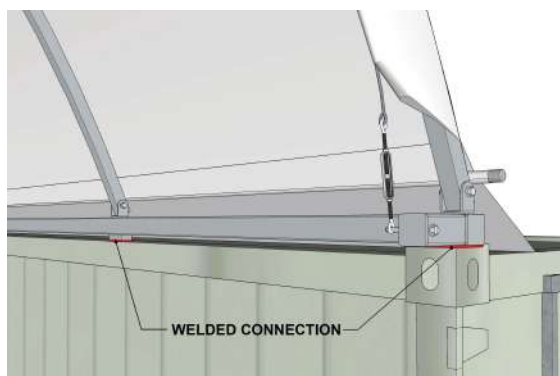
6.05m or 12.2m



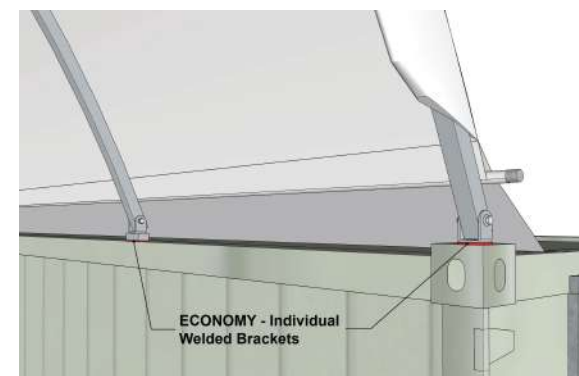
MOUNTING RAIL OPTIONS



Boltlock Mounting Rail



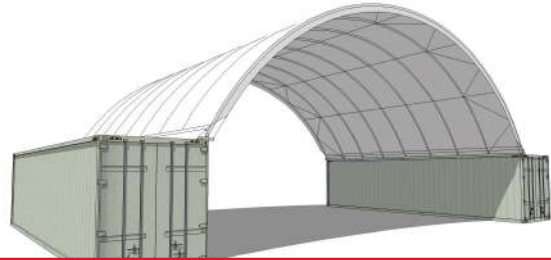
Welded Mounting Rail



Economy - Welded Mounting Brackets

MOUNTING OPTIONS

There are many mounting configurations to choose from. A DomeShelter™ consultant can advise the best option.



Containers Outside



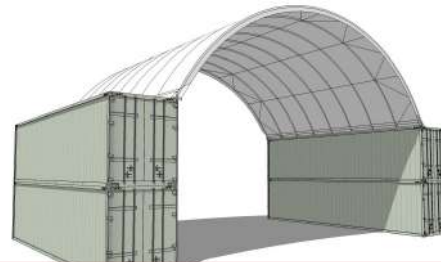
Containers Inside



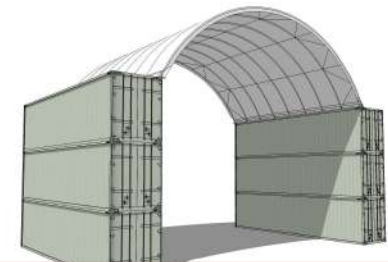
Container Inside & Outside



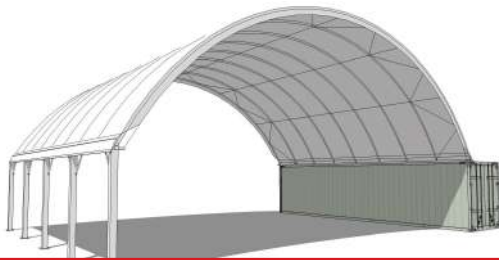
Multiple Bay



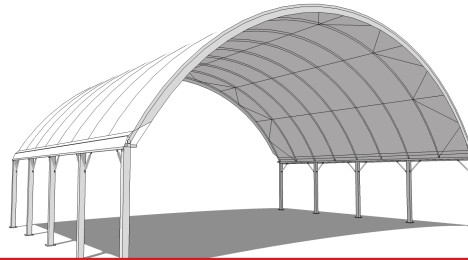
Double Stacked Containers



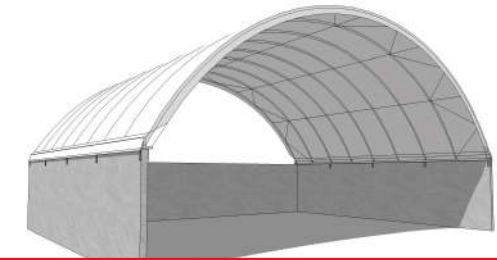
Triple Stacked Containers



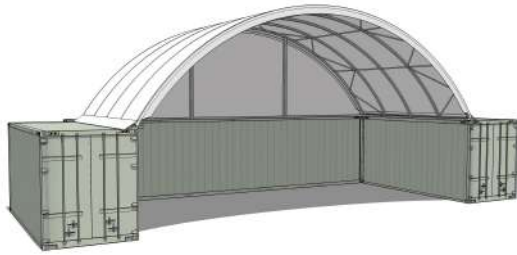
Container & Post Mounted (Combination)



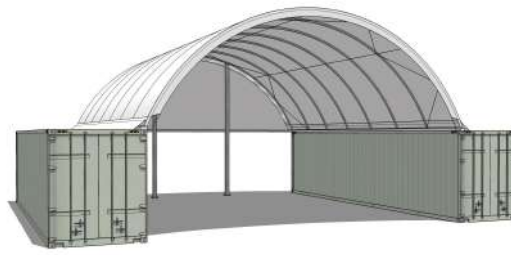
Post Mounted



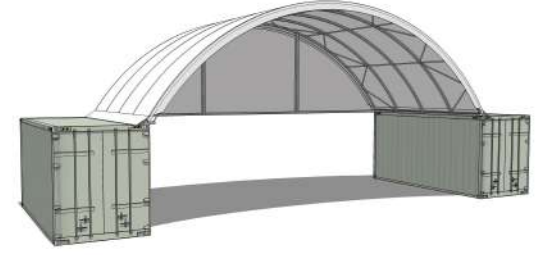
Concrete Wall Mounted



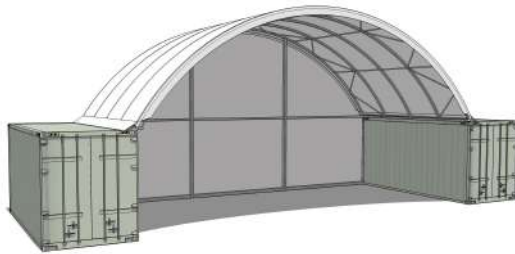
Container Supported Partial Endwall



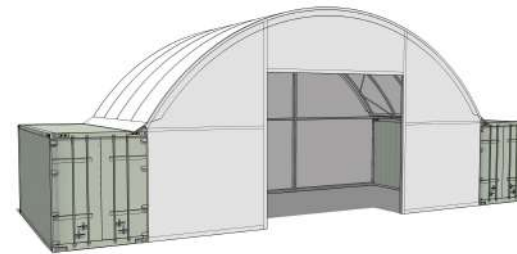
Column Supported Partial Endwall



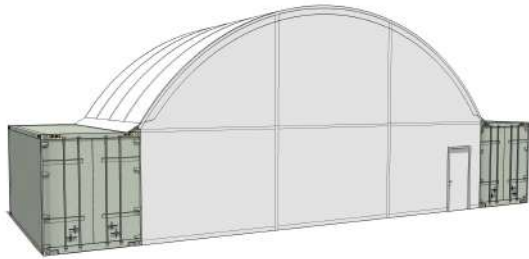
Suspended Partial Endwall



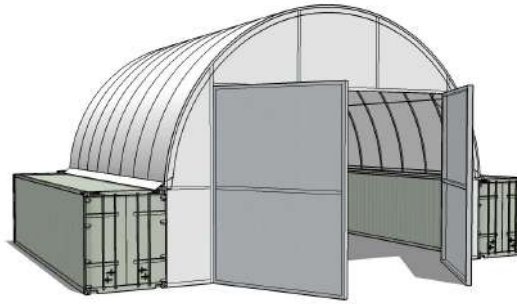
Full Endwall



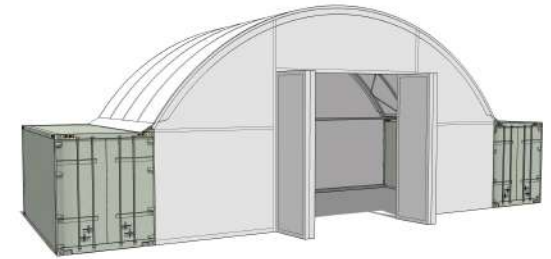
Doorway Opening Endwall



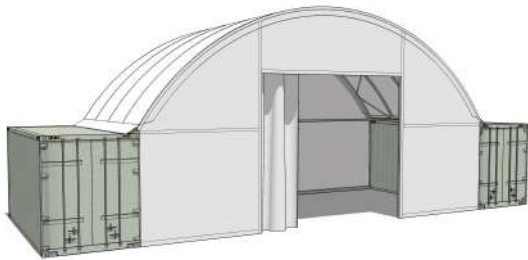
PA Door



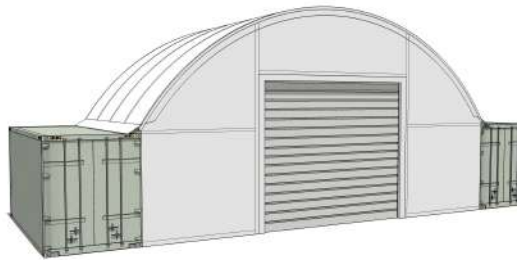
Hinged Double Door



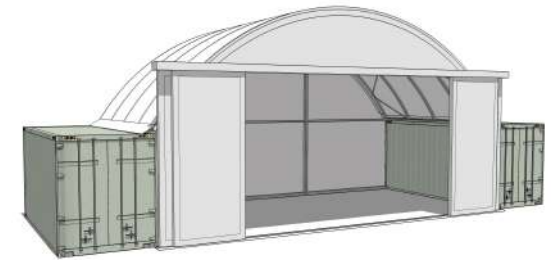
Bi-Fold Door



Sliding Curtain Door



Roller Shutter Door

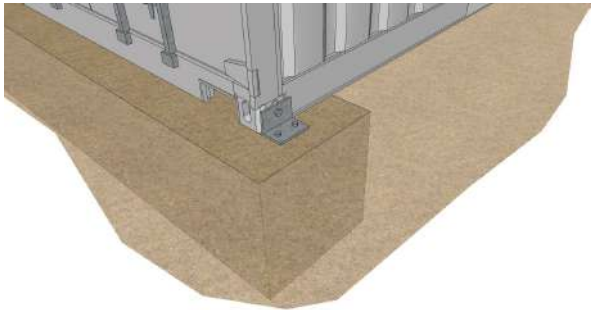


Sliding Door

SECURING (HOLD-DOWN) OPTIONS

The following illustrate a number of securing and footing options available for a Container Mounted DomeShelter™.

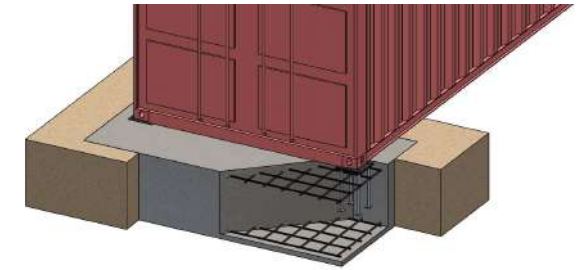
FOOTING OPTIONS



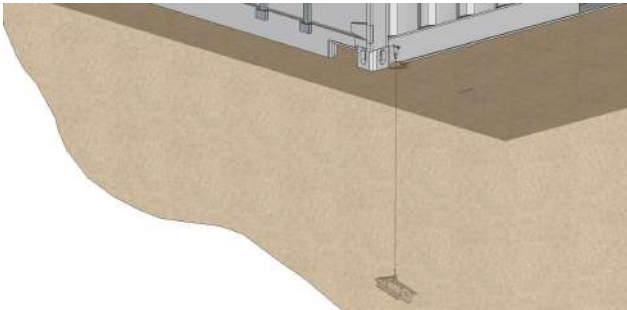
Concrete footing - container hold down bracket



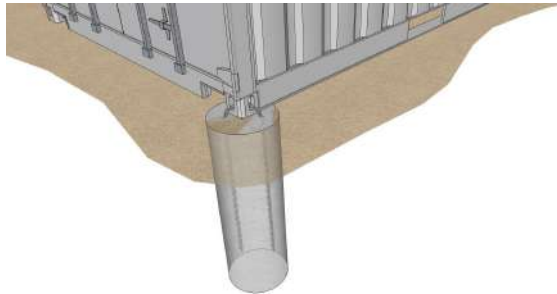
Concrete footing - welded container base plate



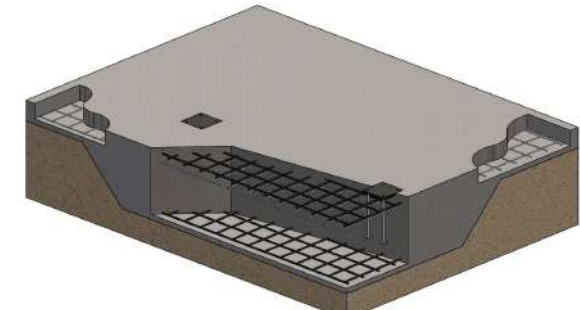
Concrete pad footing



Hulk Earth Anchor - with cable



Concrete footing with cast-in chain



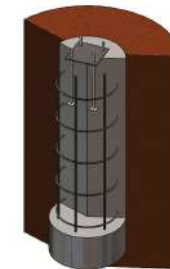
Concrete slab with thickening



External ballast - pre-cast concrete block



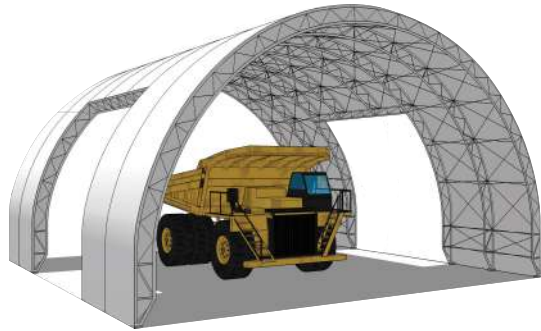
Internal ballast- sand / crushed rock / etc.



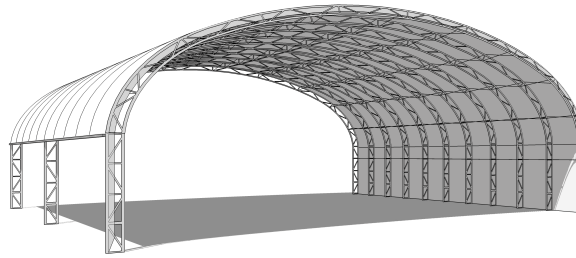
Pier footing

TRUSS PROFILE EXAMPLES FOR WIDER SPANS

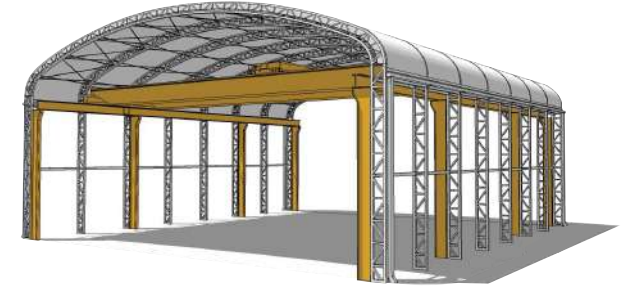
Truss style DomeShelter™ Structures are often used for some larger spans (25m +) and custom requirements.



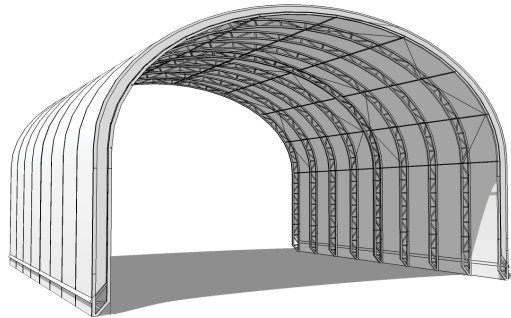
Truss A



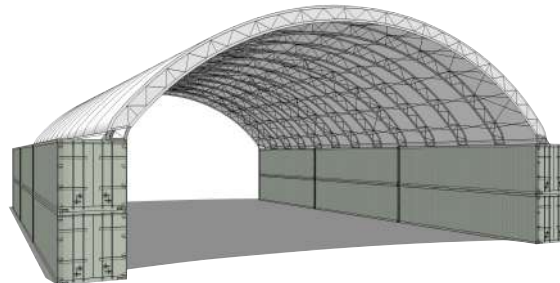
Truss B



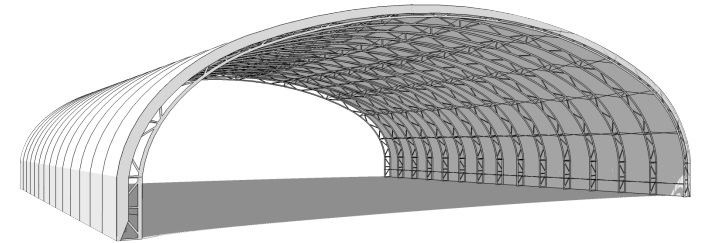
Truss C



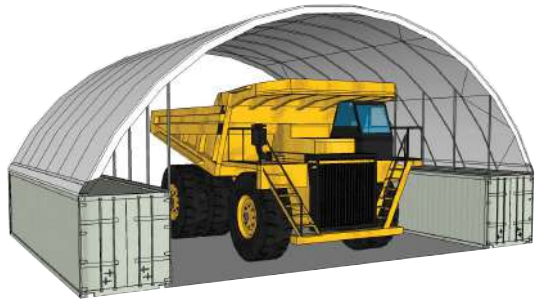
Truss D



Truss E



Truss F



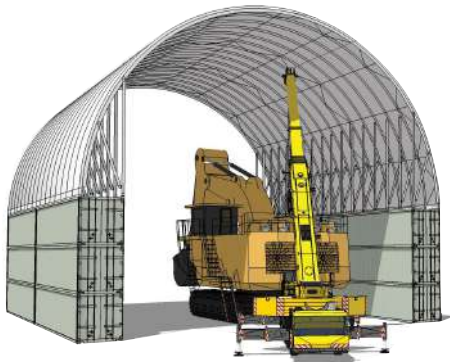
12m Standard-Rise, outside mounting



15m Super-Rise with sliding curtain door



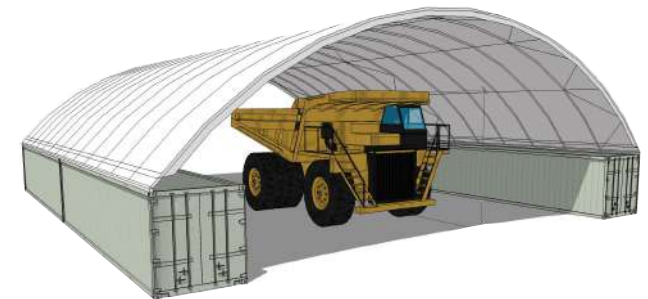
15m Super-Rise on double stacked containers



20m Super-Rise on triple stacked containers



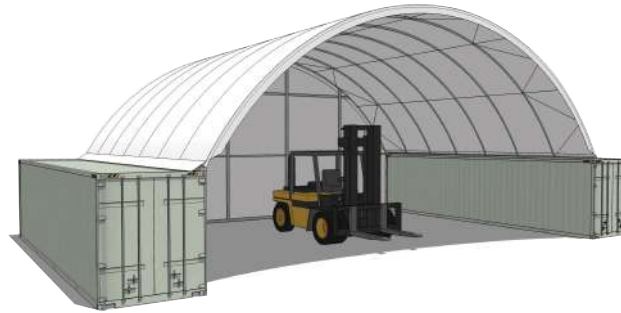
17m Standard Rise, multiple bays



21m Standard Rise single bay, outside mounting



Container, Post Combination Workshop, Garage



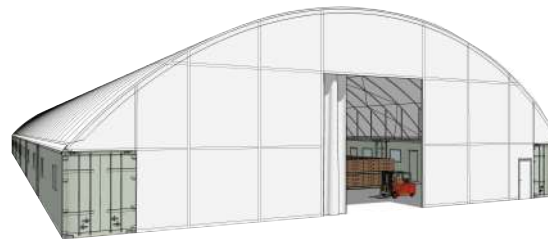
Container Mounted Workshop



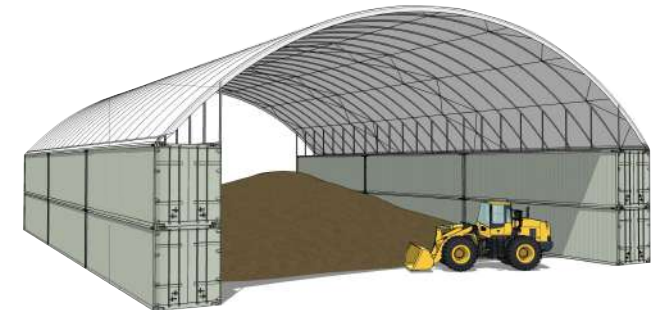
Post Mounted Workshop, Garage



Multiple Bay Workshops



Large Warehouse



Large Materials Storage

CONTACT US

DomeShelter Australia
www.DomeShelter.com.au
sales@domeshelter.com.au

Head Office

82 Byfield St
Northam 6401
Western Australia
Ph. +61 8 9690 1100

Middle East & Africa Office

Level 1, Silver Tower,
Jumeirah Lake Towers, Dubai, United
Arab Emirates
david.woods@domeshelter.com.au

Latin American Office

Av. Sgto Cayetano Beliera 3025 (RN8)
Pilar, Buenos Aires 1629
Argentina
arg@domeshelter.com.au

